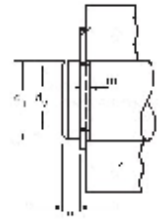
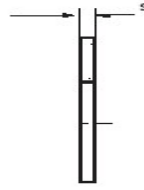
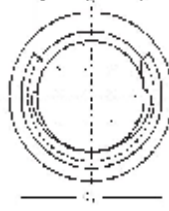
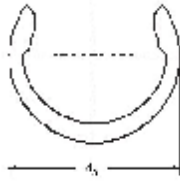


WENZHOU KAI XU AUTOMOBILE FITTING CO., LTD
(KX-MC.ring)(spring C-ring C型开口挡圈) INCH STANDARD



轴径d ₂		d ₃	厚度 S		C ₂	d ₂		槽宽m		重量 lbs/1000 ≈
基本尺寸	极限偏差	基本尺寸	基本尺寸	极限偏差	基本尺寸	基本尺寸	极限偏差	基本尺寸	极限偏差	
0.125	+0.003 -0.0001	0.165	0.015	±0.002	0.180	0.106	±0.015	0.018	+0.002 -0.0001	0.030
0.156		0.205			0.220	0.135				0.052
0.188		0.244			0.250	0.165				0.062
0.219	+0.004 -0.0001	0.275	0.025	±0.002	0.290	0.193	±0.002	0.029	+0.003 -0.0001	0.120
0.236		0.295			0.310	0.208				0.150
0.250		0.311			0.330	0.220				0.157
0.281		0.346			0.360	0.247				0.190
0.312		0.376			0.390	0.276				0.226
0.375		0.448			0.470	0.335				0.300
0.406		0.486			0.500	0.364				0.352
0.438	0.517	0.530	0.393	0.359						
0.500	+0.006 -0.0001	0.581	0.035	±0.002	0.600	0.450	±0.003	0.039	+0.003 -0.0001	0.671
0.562		0.653			0.670	0.507				0.710
0.625		0.715			0.740	0.563				0.937
0.688		0.784			0.800	0.619				1.300
0.750		0.845			0.870	0.676				1.500
0.812		0.915			0.940	0.732				1.700
0.875		0.991			1.010	0.789				2.000
0.938		1.058			1.080	0.843				2.300
1.000		1.130			1.150	0.900				2.700
1.125		1.267			1.300	1.013				4.000
1.188	+0.008 -0.0001	1.321	0.050	±0.004	1.350	1.047	±0.004	0.056	+0.004 -0.0001	5.950
1.250		1.415			1.440	1.126				5.100
1.375		1.555			1.580	1.237				6.100
1.500	+0.01 -0.0001	1.691	0.062	±0.003	1.720	1.350	±0.005	0.068	+0.004 -0.0001	7.600
1.750		1.975			2.010	1.576				12.900
2.000		2.257			2.300	1.800				16.200